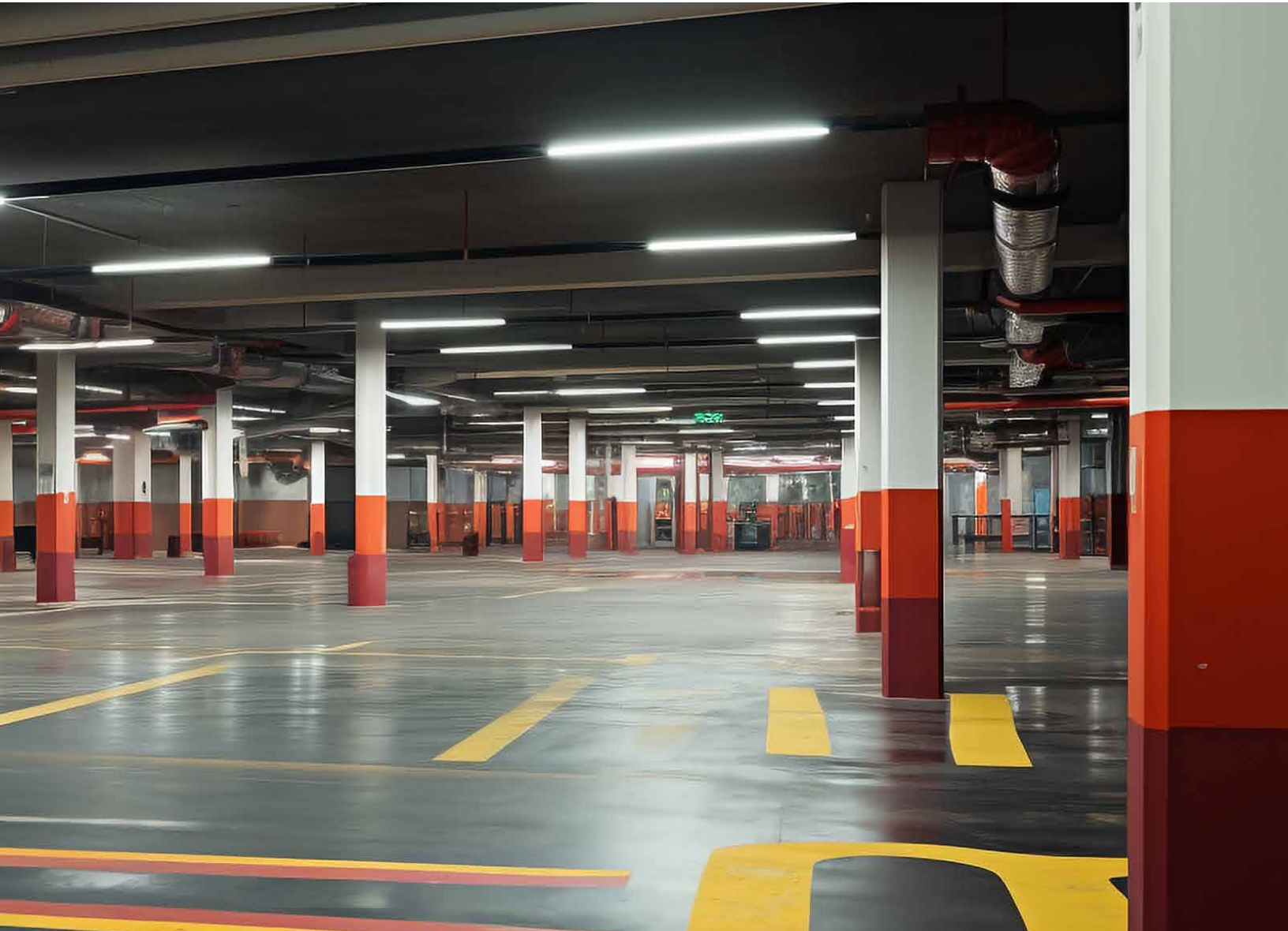


**TOPSTAR**

— Since 1958 —

# Basic Tri-proof Light



CE CB



**Application :**

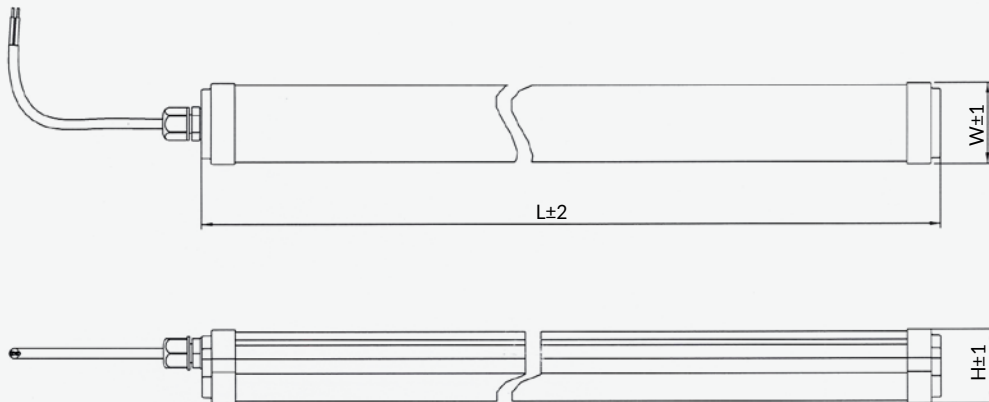
LED integrated waterproof fixture in 2Ft, 4Ft, 5Ft nominal length. High efficiency, up to 110lm/W system efficiency and 30,000 hours lifetime. Supplied with movable stainless steel mounting clips for a flexible and easy installation. LED Basic Tri-proof luminaires that provide an ideal solution for applications such as workshops, garages and outdoor covered spaces.

**Features & Benefits :**

- Easy Installation by mounting brackets.
- High quality robust PC extrusion tube.
- High efficiency , up to 110lm/W.
- $P_{st} \leq 1.0, SVM \leq 0.4$ .
- IP65、IK08.

**Application place :**

Car parks/ Underground Areas/Warehouses/Workshops.

**Available Sizes :**

Type	Height	Width	Length
Basic Tri-proof Light 2Ft	48mm	53mm	615mm
Basic Tri-proof Light 4Ft	48mm	53mm	1215mm
Basic Tri-proof Light 5Ft	48mm	53mm	1515mm

**Technical Data :**

Lamp Type	Basic Tri-proof Light-2Ft	Basic Tri-proof Light-4Ft	Basic Tri-proof Light-5Ft
Rated Voltage	220-240V		
Rated Power	16W	25W	33W
Displacement Factor--DF	DF0.7		DF0.9
Declared Luminous Flux	1760lm	2750lm	3630lm
luminous efficiency	110Lm/W		
Color Temperature	3000K/4000K/6500K		
Average Ra	Ra80		
Beam Angle	120°		
Average Life	30000H		
Working Temperature	-10~40°C		
Material	robust PC extrusion tube		
Dimmable	NO		
Environment	IP65		
Certificate	CE/CB/ERP		